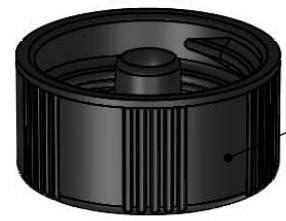
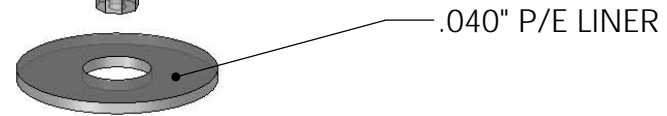


2-3/4" OAL DTU BRUSH
NNS, NYLON FILL, STAINLESS STEEL
TYPE 302 .018" STAPLE
DT00104



.040" P/E LINER

RS20/400-C
BLACK PHENOLIC
ITEM#47520

UNLESS OTHERWISE SPECIFIED:

DIMENSIONS ARE IN INCHES

TOLERANCES:

FRACTIONAL $\pm 1/16"$

ANGULAR $\pm 2^\circ$

TWO PLACE DECIMAL $\pm .02$

THREE PLACE DECIMAL $\pm .010$

	NAME	DATE
DRAWN	SWC	6/8/17
CHECKED	JME	6/12/17

PROPRIETARY AND CONFIDENTIAL

THE INFORMATION CONTAINED IN THIS DRAWING IS THE SOLE PROPERTY OF NATIONAL NOVELTY BRUSH CO. ANY REPRODUCTION IN PART OR AS A WHOLE WITHOUT THE WRITTEN PERMISSION OF NATIONAL NOVELTY BRUSH CO. IS PROHIBITED.

SCALE: 3:2

DO NOT SCALE DRAWING

SHEET 1 OF 1

NATIONAL NOVELTY BRUSH Co
-Div. MAUGUS MANUFACTURING-
ESTABLISHED 1916
LANCASTER, PA.

TITLE:
**20/400 RS BLK C 2-3/4"
OAL DTU NNS .040 P/E**

SIZE	DWG. NO.	REV
A	ITEM #3490	00

CUSTOMER APPROVAL:	
NAME	DATE

NO.	REVISION	NAME	DATE
00	ORIGINAL DRAWING	SWC	6/8/2017